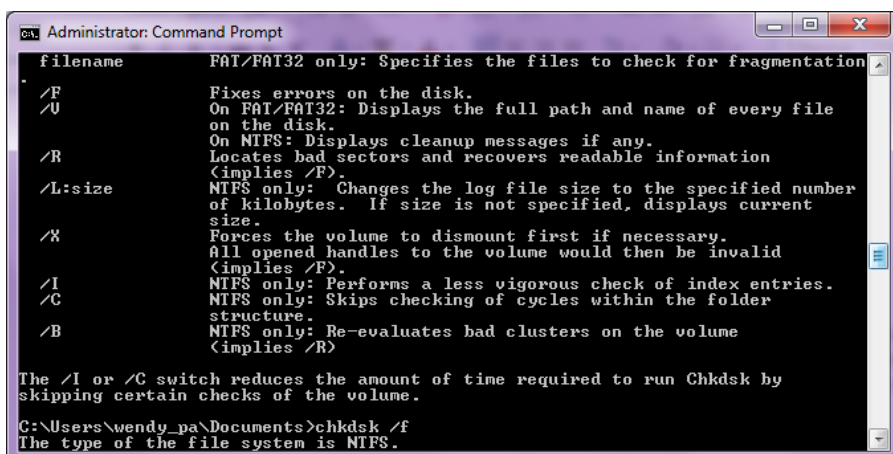


Year 8 Computing - User interfaces

Command line interface (CLI)

The command line interface enables the user to give instructions to the computer directly, using single characters, whole

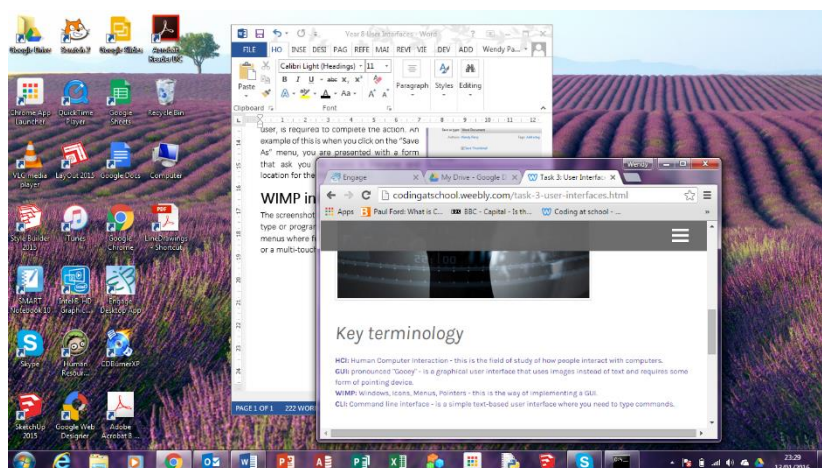
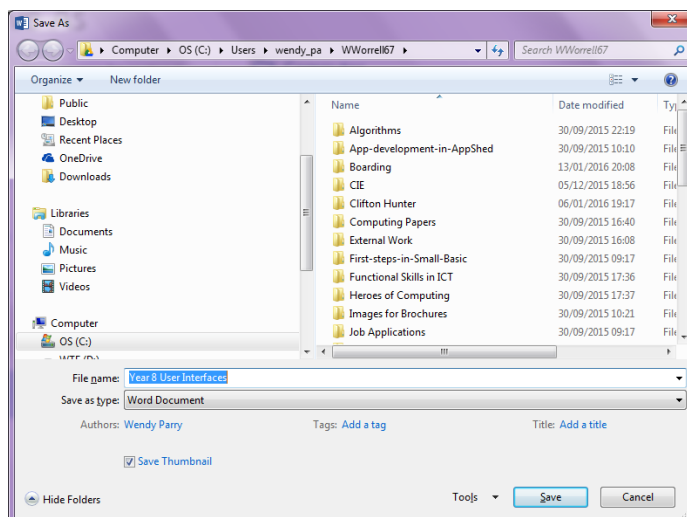
words or abbreviations. It was the first active dialogue-style interface used with a computer and is still widely used in spite of the many menu-driven interfaces available today.



Menu interfaces and forms interfaces

A menu interface uses toolbars and keyboard shortcuts to communicate with the operating system. Menu interfaces come in various different forms, including roll over, pop up, pull down or drop-down menus. The right click function on a mouse is an example of a menu interface.

A forms interface is often used when extra information, which must be supplied by the user, is required to complete the action. An example of this is when you click on the "Save As" menu, you are presented with a form that asks you to supply a filename and location for the file to be saved.



WIMP interfaces

The screenshot shows several windows. You can see different icons, each representing a different file type or program. Along the top there is a tool bar containing icons.

Above this, there are pull-down menus where further commands are available. WIMPs are graphical user interfaces that use a mouse or a multi-touch surface to enable us to manipulate icons in order to carry out tasks.